

# JOSCO

TRUSTED BY INDUSTRY SINCE 1977

## HOLE SAW CATALOGUE





# Contents

---

Hole Saws.....	1.0
Arbors, Mandrels & Accessories.....	2.0

# Josco Hole Saws

---

Josco Hole Saws feature variable pitch cutting edges with special tooth designs for best cutting results. Manufactured in Germany from strong M42 grade B1-metal (9% Molybdenum, 8% Cobalt) with a 32mm cutting depth, Josco Hole saws have the strength to do what competitive hole saws can't.

## Hints & Tips

- The pilot drill must extend beyond the edge of the hole saw teeth by 3mm (1/8")
- Always secure the material to be cut to ensure the turning action of the holesaw does not cause the workplace to spin or slip
- Can be used in drill presses, lathes, portable electric drills with corresponding speeds and adequate power output
- Start the hole saw square to the work piece with steady feed pressure. Unbalanced tooth engagement will result in erratic holesaw action and tooth stripping
- Care should be taken to ensure the proper direction of rotation
- Select proper speed for material from operating speed chart
- Use a high quality cutting oil to assist chip clearance and blade lubrication with metals (except cast iron). Petroleum cutting oil will ensure smoother operation and longer service life with aluminium
- When working at the upper ranges of the hole saws capacity they should be worked in and out to help clear chips
- Occasionally check the mandrel's drive pins to prevent them from vibrating out of the hole saws drive pin holes
- Apply even pressure (if possible at right angles to the workpiece) to prevent damage to teeth
- Avoid overheating the hole saw
- Always wear eye protection

# Hole Saws

## 4-6 TPI Vari Pitch Hole Saws (Require arbor)

M42 Grade B1-metal (9% Molybdenum, 8% Cobalt), 32mm cutting depth



COS16V



COS30V



COS51V



COS102V



COS114V

PART NO.	DIAMETER		ARBORS	RECOMMENDED MATERIALS AND SPEEDS (RPM)						BARCODE
	Inches	MM		Mild Steel	Tool/ Stainless Steel	Cast Iron	Brass	Aluminium		
COS14V	9/16	14	H1 H3 H3A	580	300	400	790	900	403701299314	
COS16V	5/8	16	H1 H3 H3A	550	275	365	730	825	403701299316	
COS17V	11/16	17	H1 H3 H3A	500	250	330	665	750	403701299317	
COS19V	3/4	19	H1 H3 H3A	460	230	300	600	690	403701299319	
COS20V	0.79	20	H1 H3 H3A	440	220	290	580	660	403701299320	
COS21V	13/16	21	H1 H3 H3A	425	210	280	560	630	403701299321	
COS22V	7/8	22	H1 H3 H3A	405	200	265	530	600	403701299322	
COS23V	0.91	23	H1 H3 H3A	390	190	255	510	575	403701299323	
COS24V	15/16	24	H1 H3 H3A	370	180	245	490	550	403701299324	
COS25V	1	25	H1 H3 H3A	350	175	235	470	525	403701299325	
COS27V	1 1/16	27	H1 H3 H3A	325	160	215	435	480	403701299327	
COS29V	1 1/8	29	H1 H3 H3A	300	150	200	400	450	403701299329	
COS30V	1 3/16	30	H1 H3 H3A	285	145	190	380	425	403701299330	
COS32V	1 1/4	32	H4 H4A	275	140	180	360	410	403701299332	
COS33V	1 5/16	33	H4 H4A	260	130	170	340	390	403701299333	
COS35V	1 3/8	35	H4 H4A	250	125	165	330	375	403701299335	
COS37V	1 7/16	37	H4 H4A	240	120	160	3315	360	403701299337	
COS38V	1 1/2	38	H4 H4A	230	115	150	300	345	403701299338	
COS40V	1 9/16	40	H4 H4A	220	110	146	290	330	403701299340	
COS41V	1 5/8	41	H4 H4A	210	105	140	280	315	403701299341	
COS43V	1 11/16	43	H4 H4A	205	100	135	270	305	403701299343	
COS44V	1 3/4	44	H4 H4A	195	95	130	260	295	403701299344	
COS46V	1 13/16	46	H4 H4A	190	95	125	250	285	403701299346	
COS48V	1 7/8	48	H4 H4A	180	90	120	240	270	403701299348	
COS51V	2	51	H4 H4A	170	85	115	230	255	403701299351	
COS52V	2 1/16	52	H4 H4A	165	80	110	220	245	403701299352	
COS54V	2 1/8	54	H4 H4A	160	85	115	230	256	403701299354	
COS57V	2 1/4	57	H4 H4A	150	75	100	200	225	403701299357	
COS59V	2 5/16	59	H4 H4A	145	75	109	195	225	403701299359	
COS60V	2 3/8	60	H4 H4A	140	70	95	190	220	403701299360	
COS64V	2 1/2	64	H4 H4A	135	65	90	180	205	403701299364	
COS65V	2 9/16	65	H4 H4A	130	65	85	175	200	403701299365	
COS67V	2 5/8	67	H4 H4A	130	65	85	170	195	403701299367	
COS68V	2 11/16	68	H4 H4A	130	65	85	170	195	403701299368	
COS70V	2 3/4	70	H4 H4A	125	60	80	160	185	403701299370	
COS73V	2 7/8	73	H4 H4A	120	60	80	160	180	403701299373	

# Hole Saws

PART NO.	DIAMETER		ARBORS	RECOMMENDED MATERIALS AND SPEEDS (RPM)					BARCODE
	Inches	MM		Mild Steel	Tool/ Stainless Steel	Cast Iron	Brass	Aluminium	
COS76V	3	76	H4 H4A	115	55	75	150	170	403701299376
COS79V	3 1/8	79	H4 H4A	110	55	70	140	165	403701299379
COS83V	3 1/4	83	H4 H4A	105	50	70	140	155	403701299383
COS86V	3 3/8	86	H4 H4A	100	50	65	130	150	403701299386
COS89V	3 1/2	89	H4 H4A	95	45	65	130	146	403701299389
COS92V	3 5/8	92	H4 H4A	95	45	60	120	140	403701299392
COS95V	3 3/4	95	H4 H4A	90	45	60	120	135	403701299395
COS98V	3 7/8	98	H4 H4A	90	45	60	120	135	403701299398
COS102V	4	102	H4 H4A	85	40	55	110	130	403701299402
COS105V	4 1/8	105	H4 H4A	80	40	55	110	120	403701299405
COS108V	4 1/4	108	H4 H4A	80	40	55	110	120	403701299408
COS111V	4 3/8	111	H4 H4A	80	40	50	100	120	403701299411
COS114V	4 1/2	114	H4 H4A	75	35	50	100	105	403701299414
COS121V	4 3/4	121	H4 H4A	70	35	45	90	95	403701299421
COS127V	5	127	H4 H4A	65	30	40	85	90	403701299427
COS140V	5 1/2	140	H4 H4A	60	30	35	80	85	403701299440
COS146V	5 3/4	146	H4 H4A	55	25	35	75	85	403701299446
COS152V	6	152	H4 H4A	55	25	35	75	85	403701299452
COS160V	6 5/16	160	H4 H4A	50	25	30	70	80	403701299460
COS168V	6 5/8	168	H4 H4A	50	25	30	70	80	403701299468
COS177V	6 15/16	177	H4 H4A	50	25	30	70	80	403701299477
COS200V	7 1/2	200	H4 H4A	40	25	20	65	75	403701299500
COS210V	8 1/4	210	H4 H4A	40	25	20	60	70	403701299510

# Hole Saws

## Fine Tooth Hole Saws

Fine tooth hole saws (requires arbor) M42 Grade Bi-Metal (9% Molybdenum, 8% Cobalt), making them stronger than your average grade of hole saw featuring a 32mm cutting depth. Josco hole saws will cut faster and outlast other brands of hole saws.

### 8–12 TPI Fine Tooth Hole Saws (Require arbor)

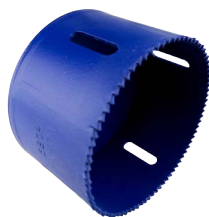
M42 Grade B1-metal (9% Molybdenum, 8% Cobalt), 32mm cutting depth



COS16R10



COS35R10



COS68R10



COS20R10



COS41R10

PART NO.	DIAMETER		ARBORS	RECOMMENDED MATERIALS AND SPEEDS (RPM)					BARCODE
	Inches	MM		Mild Steel	Tool/ Stainless Steel	Cast Iron	Brass	Aluminium	
COS16R10	5/8	16	H1 H3 H3A	550	275	365	730	825	8431057048141
COS19R10	3/4	19	H1 H3 H3A	460	230	300	600	690	8431057048165
COS20R10	0.79	20	H1 H3 H3A	440	220	290	580	660	8431057048172
COS22R10	7/8	22	H1 H3 H3A	405	200	265	530	600	8431057048196
COS25R10	1	25	H1 H3 H3A	350	175	235	470	525	8431057048226
COS27R10	1 1/16	27	H1 H3 H3A	325	160	215	435	480	8431057048233
COS29R10	1 1/8	29	H1 H3 H3A	300	150	200	400	450	8431057048240
COS30R10	1 3/16	30	H1 H3 H3A	285	145	190	380	425	8431057048257
COS32R10	1 1/4	32	H4 H4A	275	140	180	360	410	8431057048264
COS35R10	1 3/8	35	H4 H4A	250	125	165	330	375	8431057048288
COS37R10	1 7/16	37	H4 H4A	240	120	160	315	360	8431057048295
COS38R10	1 1/2	38	H4 H4A	230	115	150	300	346	8431057048301
COS40R10	1 9/16	40	H4 H4A	220	110	145	290	330	8431057048318
COS41R10	1 5/8	41	H4 H4A	210	105	140	280	315	8431057048325
COS43R10	1 11/16	43	H4 H4A	205	100	135	270	305	8431057048332
COS44R10	1 3/4	44	H4 H4A	196	95	130	260	296	8431057048349
COS46R10	1 13/16	46	H4 H4A	190	95	125	250	285	8431057048356
COS48R10	1 7/8	48	H4 H4A	180	90	120	240	270	8431057048363
COS51R10	2	51	H4 H4A	170	85	115	230	255	8431057048370
COS54R10	2 1/8	54	H4 H4A	160	80	105	210	240	8431057048394
COS60R10	2 3/8	60	H4 H4A	140	70	95	190	220	8431057048424
COS64R10	2 1/2	64	H4 H4A	135	65	90	180	205	8431057048431
COS65R10	2 9/16	65	H4 H4A	130	65	85	175	200	8431057048448
COS68R10	2 11/16	68	H4 H4A	130	65	85	170	195	8431057048462
COS70R10	2 3/4	70	H4 H4A	125	60	80	160	185	9431057048479
COS73R10	2 7/8	73	H4 H4A	120	60	80	160	180	8431057048486
COS76R10	3	76	H4 H4A	115	55	75	150	170	8431057048493
COS83R10	3 1/4	83	HA H4A	105	50	70	140	155	8431057048516
COS86R10	3 3/8	86	H4 H4A	100	50	65	130	150	8431057048523
COS98R10	3 7/8	98	H4 H4A	90	46	60	120	135	8431057048561
COS102R10	4	102	HR H4A	85	40	55	110	130	8431057048578

# Arbors, Mandrels & Accessories

## Arbors & Mandrels

Arbors and Mandrels are used for cutting mild steel, tool steel, stainless steel, cast iron, brass, aluminium, plastic, timber, fibreglass and many more. These heavy duty arbors adapt Josco Hole Saws to any power drill used by professionals.



H1



H3



H4

PART NO.	DESCRIPTION		SIZE	BARCODE
H1	Arbor (economy)	Suits Saws 14-30mm	6.35mm Round	N/A
H3	Mandrel (hex shank)	Suits Saws 14-30mm	11 mm Hex	N/A
H3/AH12	H3 mandrel (hex shank with AH12 adaptor)	Suits Saws 14-210mm	11 mm Hex	N/A
H3A	Mandrel (hex shank)	Suits Saws 14-30mm	9.52mm Hex	N/A
H4	Mandrel (quick change)	Suits Saws 32-210mm	11 mm Hex	N/A
H4A	Mandrel (quick change)	Suits Saws 32-210mm	9.52mm Hex	N/A

## Accessories

Extensions and Replacement Drill Bits.



EXT330



BR85



BR105

PART NO.	DESCRIPTION		SIZE	BARCODE
EXT330	Extension (suits mandrels with 11 mm hex shank)		330mm	N/A
BR85	HSS Replacement Drill Bit (suits H3 and H4A mandrels)		85mm	N/A
BR105	HSS Replacement Drill Bit (suits H1, H3A and H4 mandrels)		105mm	N/A